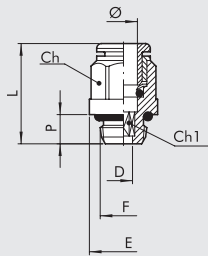




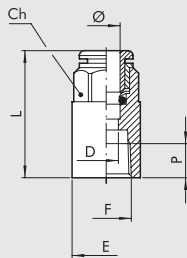
RACORES AUTOMÁTICOS DE LATÓN PARA TUBOS DE PULGADAS Y ROSCA UNF o NPT

RECTO, CILÍNDRICO, MACHO (RU1)



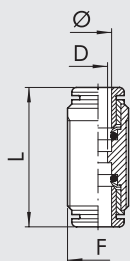
Código	Ref.	Ø	F	Ch		Ch1		P	L	D	E
				Inc	mm	Inc	mm				
2U01A02	RU1	1/8	10-32 UNF	—	—	5/64	2	3.5	13	2	5.9
2U01A03	RU1	1/8	1/8 NPT	5/16	8	5/64	2	6	13.7	2	13
2U01001	RU1	5/32	10-32 UNF	—	—	5/64	2	3.5	20.3	2	9
2U01002	RU1	5/32	1/8 NPT	0.394	10	0.118	3	6	18	3	13
2U01003	RU1	5/32	1/4 NPT	0.394	10	0.118	3	8	19.8	3	16.4
2U01000	RU1	1/4	10-32 UNF	—	—	5/64	2	3.5	21.9	2	11
2U01007	RU1	1/4	1/8 NPT	0.472	12	0.157	4	6	21.6	4	13
2U01008	RU1	1/4	1/4 NPT	0.472	12	0.157	4	8	20.3	4	16.4
2U01020	RU1	1/4	3/8 NPT	0.472	12	0.157	4	9	21.3	4	20
2U01009	RU1	5/16	1/8 NPT	0.512	13	0.197	5	6	25.4	5	14
2U01010	RU1	5/16	1/4 NPT	0.551	14	0.236	6	8	24.4	6	16.4
2U01011	RU1	5/16	3/8 NPT	0.551	14	0.236	6	9	22.8	6	20
2U01012	RU1	3/8	1/4 NPT	5/8	16	0.276	7	8	29.2	7	17.7
2U01013	RU1	3/8	3/8 NPT	5/8	16	5/16	8	9	26.5	8	20
2U01021	RU1	3/8	1/2 NPT	5/8	16	5/16	8	11	30	8	24.5
2U01014	RU1	1/2	3/8 NPT	0.866	22	0.394	10	9	32.5	10	20
2U01015	RU1	1/2	1/2 NPT	0.866	22	0.394	10	11	30	10	24.5

RECTO, HEMBRA (RU2)



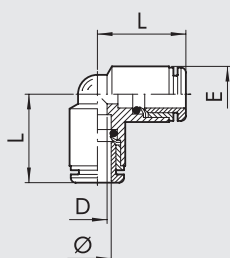
Código	Ref.	Ø	F	Ch		P	L	D	E
				Inc	mm				
2U02A03	RU2	1/8	1/8 NPT	5/16	8	7	20.8	2.3	14
2U02001	RU2	5/32	1/8 NPT	0.394	10	7	26.2	3	14
2U02002	RU2	5/32	1/4 NPT	0.394	10	7	28.6	3	17
2U02005	RU2	1/4	1/8 NPT	0.472	12	7	27.1	5	14
2U02006	RU2	1/4	1/4 NPT	0.472	12	7	29.3	5	17
2U02007	RU2	5/16	1/8 NPT	0.512	13	7	28.1	7	14
2U02008	RU2	5/16	1/4 NPT	0.551	14	7	30	7	17

RECTO, INTERMEDIO (RU3)



Código	Ref.	Ø	F	L	D
2003A01	R3	1/8	M8x0.75	18.4	2
2L03001	RL3	5/32	M11x1	30.6	2.5
2U03003	RU3	1/4	M13x1	33	4.5
2L03004	RL3	5/16	M15x1	35.7	6.5
2U03005	RU3	3/8	M17x1	39.8	8
2U03006	RU3	1/2	M22x1	43.2	10

CODO, INTERMEDIO (RU4)



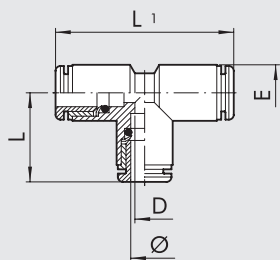
Código	Ref.	Ø	L	D	E
2004A01	R4	1/8	10.4	2	6.3
2L04001	RL4	5/32	16.7	2.5	9.5
2U04003	RU4	1/4	19	4.5	11.5
2L04004	RL4	5/16	21.3	6.5	13.5
2U04005	RU4	3/8	23.6	8	15.5
2U04006	RU4	1/2	27.2	11	20.5

RACORES AUTOMÁTICOS DE LATÓN PARA TUBOS DE PULGADAS Y ROSCA UNF o NPT

RACORES

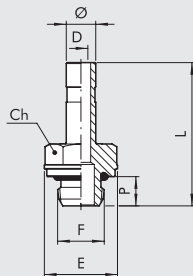
UNF
NPT

EN T, INTERMEDIO (RU5)



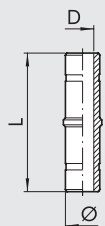
Código	Ref.	Ø	L	L1	D	E
2005A01	R5	1/8	10.4	20.8	2	6.3
2U05001	RL5	5/32	16.7	33.4	2.5	9.5
2U05003	RU5	1/4	19	38	4.5	11.5
2U05004	RL5	5/16	21.3	42.6	6.5	13.5
2U05005	RU5	3/8	23.6	47.2	8	15.5
2U05006	RU5	1/2	27.2	54.4	11	20.5

ADAPTADOR ROSCADO (RU6)



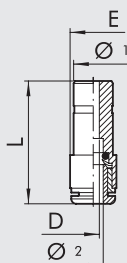
Código	Ref.	Ø	F	Ch		P	L	D	E
				Inc	mm				
2U06A01	RU6	1/8	10-32 UNF	0.197	5	3.5	18.6	2	5.8
2U06A02	RU6	1/8	1/8 NPT	0.472	12	6	22.6	2	13
2U06001	RU6	5/32	10-32 UNF	5/16	8	4	25.2	2	9
2U06002	RU6	5/32	1/8 NPT	0.472	12	6	27.7	2.5	13
2U06003	RU6	5/32	1/4 NPT	0.551	14	8	30.2	2.5	16.4
2U06000	RU6	1/4	10-32 UNF	5/16	8	4	25.7	2	9
2U06007	RU6	1/4	1/8 NPT	0.472	12	6	28.2	4	13
2U06008	RU6	1/4	1/4 NPT	0.551	14	8	30.5	4	16.4
2U06020	RU6	1/4	3/8 NPT	0.669	17	9	33.3	4	20
2U06009	RU6	5/16	1/8 NPT	0.472	12	6	29.2	5.5	13
2U06010	RU6	5/16	1/4 NPT	0.551	14	8	31.5	6	16.4
2U06011	RU6	5/16	3/8 NPT	0.669	17	9	34.3	6	20
2U06012	RU6	3/8	1/4 NPT	0.551	14	8	34.8	7.3	16.4
2U06013	RU6	3/8	3/8 NPT	0.669	17	9	37.6	7.3	20
2U06022	RU6	3/8	1/2 NPT	0.748	19	11	41.2	7.3	24.5
2U06014	RU6	1/2	3/8 NPT	0.669	17	9	39.4	10.5	20
2U06015	RU6	1/2	1/2 NPT	0.748	19	11	43.7	10.5	24.5

EXTENSIÓN (RU7)



Código	Ref.	Ø	L	D
2007001	R7	5/32	34	2
2U07003	RU7	1/4	35.5	4
2U07004	RL7	5/16	37.5	6
2U07005	RU7	3/8	44	7.3
2U07006	RU7	1/2	50.8	10.5

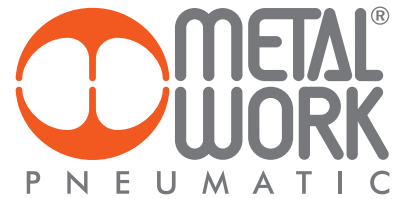
REDUCTOR (RU8)



Código	Ref.	Ø 1	Ø 2	L	D	E
2008A02	R8	5/32	1/8	18.4	2	5
2U08002	RU8	1/4	5/32	30.6	2.5	11
2U08004	RL8	5/16	5/32	33	4.5	12
2U08006	RU8	5/16	1/4	35.7	6.5	13.5
2U08007	RU8	3/8	1/4	39.8	8	17
2U08010	RU8	1/2	1/4	43.2	10	19
2U08011	RU8	1/2	5/16	35.9	7	14.5
2U08015	RU8	1/2	3/8	41.3	8	16

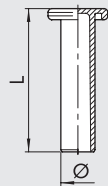
RACORES AUTOMÁTICOS DE LATÓN PARA TUBOS DE PULGADAS Y ROSCA UNF o NPT

RACORES



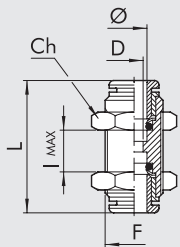
UNF
NPT

TAPÓN (RU9)



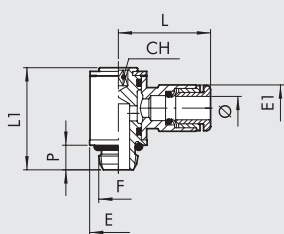
Código	Ref.	Ø	L
2L10A01	RL9T	1/8	19.6
2L10001	RL9T	5/32	27
2U10003	RU9	1/4	29.8
2L10004	RL9T	5/16	33.6
2U10005	RU9	3/8	36.8
2U10006	RU9	1/2	39.1

RECTO, INTERMEDIO, PASAMURO (RU10)



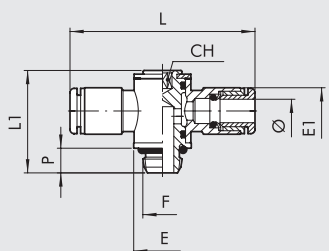
Código	Ref.	Ø	F	Ch		L	D	I max
				Inc	mm			
2011A01	R10	1/8	M8x0.75	0.394	10	18.4	2	5
2L11001	RL10	5/32	M11x1	0.512	13	30.6	2.5	11
2U11003	RU10	1/4	M13x1	5/8	16	33	4.5	12
2L11004	RL10	5/16	M15x1	0.669	17	35.7	6.5	13.5
2U11005	RU10	3/8	M17x1	0.787	20	39.8	8	17
2U11006	RU10	1/2	M22x1	0.984	25	43.2	10	19

BANJO CON ANILLO MACHO ROTATORIO SIMPLE (RU15)



Código	Ref.	Ø	F	Ch		P	L	LI	E	EI
				Inc	mm					
2U14104	RU15	1/8	10-32 UNF	5/64	2	3.5	12.7	13.7	5.8	7
2U14001	RU15	5/32	10-32 UNF	5/64	2	3.5	20.2	18.8	9.5	9.5
2U14002	RU15	5/32	1/8 NPT	0.118	3	6	21.3	25.6	14	9.5
2U14106	RU15	1/4	10-32 UNF	5/64	2	3.5	23.5	18.8	9.5	12
2U14005	RU15	1/4	1/8 NPT	0.118	3	6	23	25.6	14	12
2U14007	RU15	1/4	1/4 NPT	5/32	4	8	24.5	29.8	18	12
2U14006	RU15	5/16	1/8 NPT	0.118	3	6	24.8	25.6	14	13.8
2U14008	RU15	5/16	1/4 NPT	5/32	4	8	26.5	29.8	18	13.8
2U14013	RU15	5/16	3/8 NPT	0.197	5	9	28.5	35.6	22	13.8
2U14009	RU15	3/8	1/4 NPT	5/32	4	8	31.7	29.8	18	16.5
2U14014	RU15	3/8	3/8 NPT	0.197	5	9	33.1	35.6	22	16
2U14011	RU15	1/2	3/8 NPT	0.197	5	9	36.6	35.6	22	20
2U14012	RU15	1/2	1/2 NPT	0.315	8	11	38.1	40.8	26	20

BANJO CON ANILLO MACHO ROTATORIO DUAL (RU16)



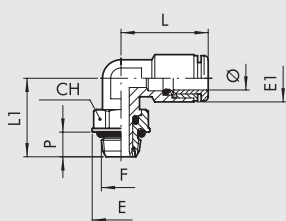
Código	Ref.	Ø	F	Ch		P	L	LI	E	EI
				Inc	mm					
2U15001	RU16	5/32	10-32 UNF	5/64	2	3.5	40.4	18.8	9.5	9.5
2U15002	RU16	5/32	1/8 NPT	5/64	2	6	42.6	25.6	14	9.5
2U15106	RU16	1/4	10-32 UNF	0.118	3	3.5	47	18.8	9.5	12
2U15005	RU16	1/4	1/8 NPT	5/64	2	6	46	25.6	14	12
2U15007	RU16	1/4	1/4 NPT	0.118	3	8	49	29.8	18	12
2U15006	RU16	5/16	1/8 NPT	5/32	4	6	49.6	25.6	14	13.8
2U15008	RU16	5/16	1/4 NPT	0.118	3	8	53	29.8	18	13.8
2U15013	RU16	5/16	3/8 NPT	5/32	4	9	57	35.6	22	13.8
2U15009	RU16	3/8	1/4 NPT	0.197	5	8	63.4	29.8	18	16.5
2U15014	RU16	3/8	3/8 NPT	5/32	4	9	66.2	35.6	22	16
2U15011	RU16	1/2	3/8 NPT	0.197	5	9	73.2	35.6	22	20
2U15012	RU16	1/2	1/2 NPT	0.315	8	11	78.2	40.8	26	20

RACORES AUTOMÁTICOS DE LATÓN PARA TUBOS DE PULGADAS Y ROSCA UNF o NPT

RACORES

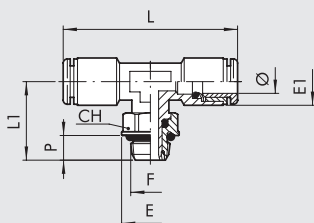
UNF
NPT

CODO ROTATORIO, MACHO, CILÍNDRICO (RU31)



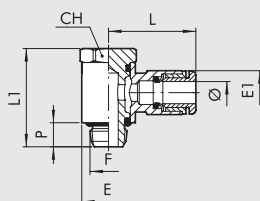
Código	Ref.	Ø	F	Ch		P	L	L1	E	EI
				Inc	mm					
2U31001	RU31	5/32	10-32 UNF	0.354	9	4	18.6	15.3	9.9	9.5
2U31002	RU31	5/32	1/8 NPT	0.472	12	6	18.6	19.1	13	9.5
2U31003	RU31	5/32	1/4 NPT	0.551	14	8	18.6	21.1	16.4	9.5
2U31007	RU31	1/4	10-32 UNF	0.354	9	4	21.9	15.3	9.9	11.8
2U31008	RU31	1/4	1/8 NPT	0.472	12	6	21.9	19.1	13	11.8
2U31009	RU31	1/4	1/4 NPT	0.551	14	8	21.9	21.1	16.4	11.8
2U31010	RU31	5/16	1/8 NPT	0.472	12	6	25.4	19.1	13	13.5
2U31011	RU31	5/16	1/4 NPT	0.551	14	8	25.4	21.1	16.4	13.5
2U31012	RU31	5/16	3/8 NPT	0.669	17	9	23.6	27.1	20	13.5
2U31013	RU31	3/8	1/4 NPT	0.551	14	8	27.5	24.5	16.4	16
2U31014	RU31	3/8	3/8 NPT	0.669	17	9	27.5	27.1	20	16
2U31015	RU31	3/8	1/2 NPT	0.866	22	11	27.5	30	24.5	16
2U31017	RU31	1/2	3/8 NPT	0.67	17	9	30.2	28.2	20	20
2U31018	RU31	1/2	1/2 NPT	0.866	22	11	30.2	30.5	24.5	20

EN T CENTRAL, MACHO, CILÍNDRICA, ROTATORIA (RU32)



Código	Ref.	Ø	F	Ch		P	L	L1	E	EI
				Inc	mm					
2U32002	RU32	5/32	1/8 NPT	0.472	12	6	37.2	19.1	13	9.5
2U32003	RU32	5/32	1/4 NPT	0.551	14	8	37.2	21.1	16.4	9.5
2U32007	RU32	1/4	10-32 UNF	0.354	9	4	45	15.3	9.9	11.8
2U32008	RU32	1/4	1/8 NPT	0.472	12	6	45	19.1	13	11.8
2U32009	RU32	1/4	1/4 NPT	0.551	14	8	45	21.1	16.4	11.8
2U32010	RU32	5/16	1/8 NPT	0.472	12	6	50.8	19.1	13	13.5
2U32011	RU32	5/16	1/4 NPT	0.551	14	8	50.8	21.1	16.4	13.5
2U32012	RU32	5/16	3/8 NPT	0.669	17	9	47.2	27.1	20	13.5
2U32013	RU32	3/8	1/4 NPT	0.551	14	8	55	24.5	16.4	16
2U32014	RU32	3/8	3/8 NPT	0.669	17	9	55	27.1	20	16
2U32015	RU32	3/8	1/2 NPT	0.866	22	11	55	30	24.5	16
2U32017	RU32	1/2	3/8 NPT	0.67	17	9	60.4	28.2	20	20
2U32018	RU32	1/2	1/2 NPT	0.866	22	11	60.4	30.5	24.5	20

BANJO MACHO, ANILLO SIMPLE ORIENTABLE (RU54)



Código	Ref.	Ø	F	Ch		P	L	L1	E	EI
				Inc	mm					
2U54001	RU54	5/32	10-32 UNF	0.354	9	4.5	20.2	18.7	9.5	9.5
2U54002	RU54	5/32	1/8 NPT	0.512	13	6.2	21.3	25.3	14	9.5
2U54007	RU54	1/4	10-32 UNF	0.354	9	4.5	23.5	18.7	9.5	11.8
2U54008	RU54	1/4	1/8 NPT	0.512	13	6.2	23	25.3	14	11.8
2U54009	RU54	1/4	1/4 NPT	5/8	16	8	24.5	29.2	18	11.8
2U54010	RU54	5/16	1/8 NPT	0.512	13	6.2	24.8	25.3	14	13.8
2U54011	RU54	5/16	1/4 NPT	5/8	16	8	26.5	29.2	18	13.8
2U54012	RU54	5/16	3/8 NPT	0.787	20	9	28.5	35.4	21	13.8
2U54013	RU54	3/8	1/4 NPT	5/8	16	8	31.7	29.2	18	16
2U54014	RU54	3/8	3/8 NPT	0.787	20	9	33.1	35.4	21	16
2U54016	RU54	1/2	3/8 NPT	0.787	20	10	36.6	35.4	21	20.2
2U54017	RU54	1/2	1/2 NPT	0.984	25	12.5	38.1	40	26	20.2

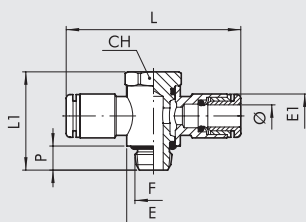
RACORES AUTOMÁTICOS DE LATÓN PARA TUBOS DE PULGADAS Y ROSCA UNF o NPT

RACORES



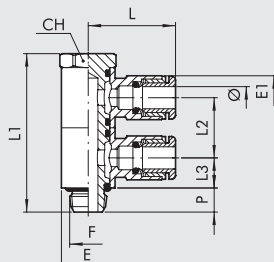
UNF
NPT

BBANJO MACHO, ANILLO DOBLE ORIENTABLE (RU55)



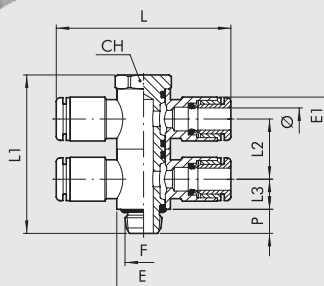
Código	Ref.	Ø	F	Ch		P	L	L1	E	E1
				Inc	mm					
2U55001	RU55	5/32	10-32 UNF	0.354	9	4.5	40.4	18.7	9.5	9.5
2U55002	RU55	5/32	1/8 NPT	0.512	13	6.2	42.6	25.3	14	9.5
2U55007	RU55	1/4	10-32 UNF	0.354	9	4.5	47	18.7	9.5	11.8
2U55008	RU55	1/4	1/8 NPT	0.512	13	6.2	46	25.3	14	11.8
2U55009	RU55	1/4	1/4 NPT	5/64	16	8	49	29.2	18	11.8
2U55010	RU55	5/16	1/8 NPT	0.512	13	6.2	49.6	25.3	14	13.8
2U55011	RU55	5/16	1/4 NPT	5/64	16	8	53	29.2	18	13.8
2U55012	RU55	5/16	3/8 NPT	0.787	20	9	57	35.4	21	13.8
2U55013	RU55	3/8	1/4 NPT	5/64	16	8	63.4	29.2	18	16
2U55014	RU55	3/8	3/8 NPT	0.787	20	9	66.2	35.4	21	16
2U55016	RU55	1/2	3/8 NPT	0.787	20	10	73.2	35.4	21	20.2
2U55017	RU55	1/2	1/2 NPT	0.984	25	12.5	76.2	40	26	20.2

BANJO MACHO DOBLE, ANILLOS SIMPLES ORIENTABLES (RU56)



Código	Ref.	Ø	F	Ch		P	L	L1	L2	L3	E	E1
				Inc	mm							
2U56001	RU56	5/32	10-32 UNF	0.354	9	4.5	20.2	30.2	11.5	5.8	9.5	9.5
2U56002	RU56	5/32	1/8 NPT	0.512	13	6.2	21.3	40.6	15.5	7.75	14	9.5
2U56007	RU56	1/4	10-32 UNF	0.354	9	4.5	23.5	30.2	11.5	5.8	9.5	11.8
2U56008	RU56	1/4	1/8 NPT	0.512	13	6.2	23	40.6	15.5	7.75	14	11.8
2U56009	RU56	1/4	1/4 NP	5/8	16	8	24.5	46.4	17.2	8.6	18	11.8
2U56010	RU56	5/16	1/8 NPT	0.512	13	6.2	24.8	40.6	15.5	7.75	14	13.8
2U56011	RU56	5/16	1/4 NPT	5/8	16	8	26.5	46.4	17.2	8.6	18	13.8
2U56012	RU56	5/16	3/8 NPT	0.787	20	9	28.5	56.8	21.4	10.7	21	13.8
2U56013	RU56	3/8	1/4 NPT	5/8	16	8	31.7	46.4	17.2	8.6	18	16
2U56014	RU56	3/8	3/8 NPT	0.787	20	9	33.1	56.8	21.4	10.7	21	16
2U56016	RU56	1/2	3/8 NPT	0.787	20	10	36.6	56.8	21.4	10.7	21	20.2
2U56017	RU56	1/2	1/2 NPT	0.984	25	12.5	38.1	64	24	12	26	20.2

BANJO MACHO DOBLE, ANILLOS DOBLES ORIENTABLES (RU57)



Código	Ref.	Ø	F	Ch		P	L	L1	L2	L3	E	E1
				Inc	mm							
2U57001	RU57	5/32	10-32 UNF	0.354	9	4.5	40.4	30.2	11.5	5.8	9.5	9.5
2U57002	RU57	5/32	1/8 NPT	0.512	13	6.2	42.6	40.6	15.5	7.75	14	9.5
2U57007	RU57	1/4	10-32 UNF	0.354	9	4.5	47	30.2	11.5	5.8	9.5	11.8
2U57008	RU57	1/4	1/8 NPT	0.512	13	6.2	46	40.6	15.5	7.75	14	11.8
2U57009	RU57	1/4	1/4 NPT	5/8	16	8	49	46.4	17.2	8.6	18	11.8
2U57010	RU57	5/16	1/8 NPT	0.512	13	6.2	49.6	40.6	15.5	7.75	14	13.8
2U57011	RU57	5/16	1/4 NPT	5/8	16	8	53	46.4	17.2	8.6	18	13.8
2U57012	RU57	5/16	3/8 NPT	0.787	20	9	57	56.8	21.4	10.7	21	13.8
2U57013	RU57	3/8	1/4 NPT	5/8	16	8	63.4	46.4	17.2	8.6	18	16
2U57014	RU57	3/8	3/8 NPT	0.787	20	9	66.2	56.8	21.4	10.7	21	16
2U57016	RU57	1/2	3/8 NPT	0.787	20	10	73.2	56.8	21.4	10.7	21	20.2
2U57017	RU57	1/2	1/2 NPT	0.984	25	12.5	76.2	64	24	12	26	20.2

RACORES AUTOMÁTICOS DE LATÓN PARA TUBOS DE PULGADAS Y ROSCA UNF o NPT

RACORES